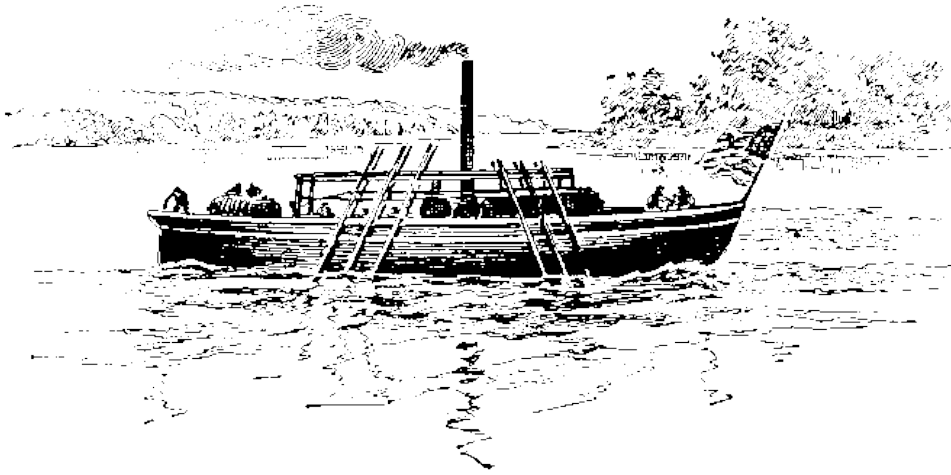


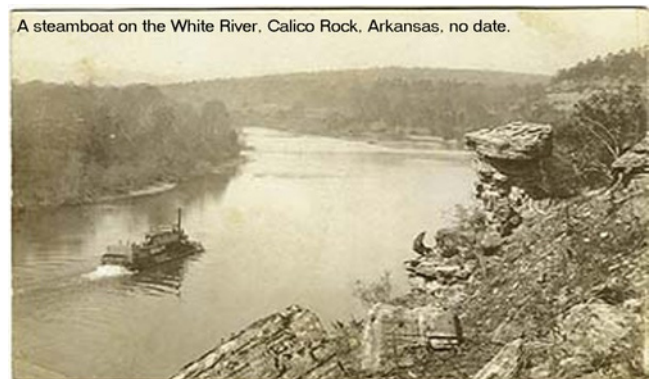
Steamboating (1831-1902)



John Fitch built the first steamboat in 1796, although the honor is given to Robert Fulton. It was a very primitive design.

The Victoria was the first steamboat to travel by Calico Rock on her way to the North Fork River in 1831.

The **musical whistle** of a steamboat could be heard for twenty miles. When folks heard it, they rushed to the banks of the river to cheer.



They flocked to **Calico Landing** to help unload the mail and supplies for local stores. After greeting passengers, they loaded wood for fuel and raw lumber or bales of cotton. They may have been stacked on the dock for months.

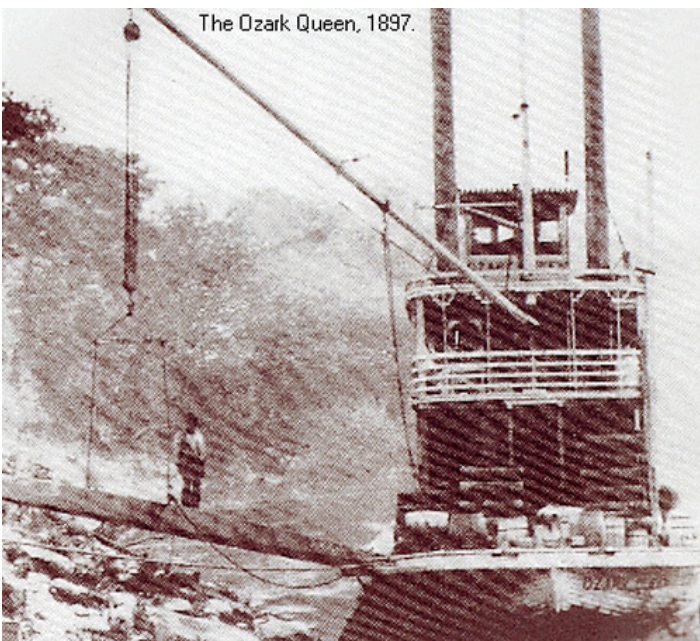
Designed for Function

A steamboat was built for practicality, not elegance.

A **side-wheeler** is faster, but a **sternwheeler** was necessary to navigate the twists and turns of the White. To make up speed, the boiling pressure was increased. Explosions and fires were the number one cause of accidents or death.

Shallow rivers required a shallow hull. All the decks had to be built above the hull.

The **cargo deck** held the boiler, cargo and crew quarters. The **boiler deck** had staterooms, bar, and pantry. The **Texas deck** had a dining hall, staterooms and some crew quarters. Some of the larger steamboats had a **promenade deck**. The **pilothouse** was on top.



Steamboats had two smokestacks for an unobstructed view in the pilothouse. A **gangplank** could be swung out to unload cargo at almost any spot along the river.

Steamboat Crew

The average crew was 15 to 30 men. The **master** was the owner. He hired and fired the crew.

The **captain** ran the ship. He communicated with the **engineer**, who ran the engine and boiler. There were two strings in the pilothouse connected to **two bells** in the engine room. The deep tone bell meant “stop.” The high tone bell meant “reverse” or “stop.” There was a **speaking tube** in a few steamboats, too.

Captains and engineers had to be licensed out of Memphis.

The **clerk** was in charge of the manifest and checked off each piece of cargo loaded or unloaded from the boat.

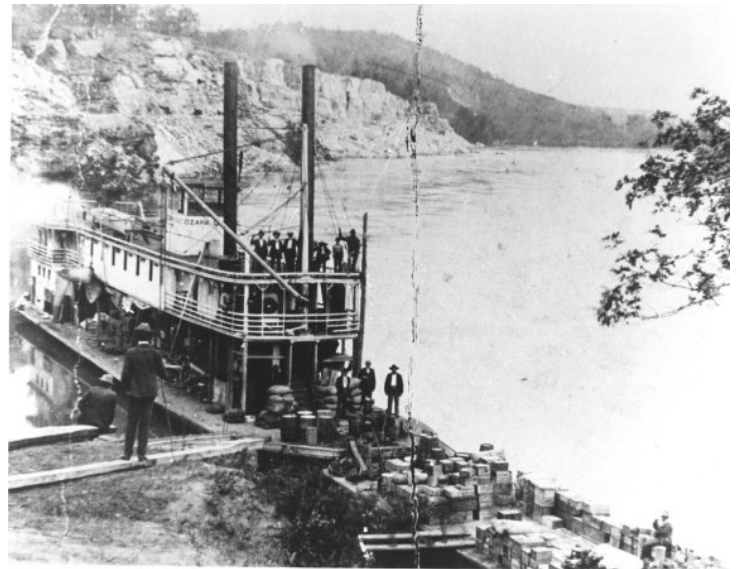
The **mate** directed the crew to load and unload. The **crew** did all the grunt working...loading, unloading, singing the lead line, and building the fire.

Deckhands sung out the depths of the water for the captain. This was known as **singing the lead line**.

Two black men who began as deckhands rose to prominence. **Bruce Smith** became an engineer and **Dan Smith** became a captain.

The Ozark Queen

The *Ozark Queen* was the last steamboat to dock at Calico Landing in 1903. There are more historic photographs of the *Queen* than any other steamboat that landed here.



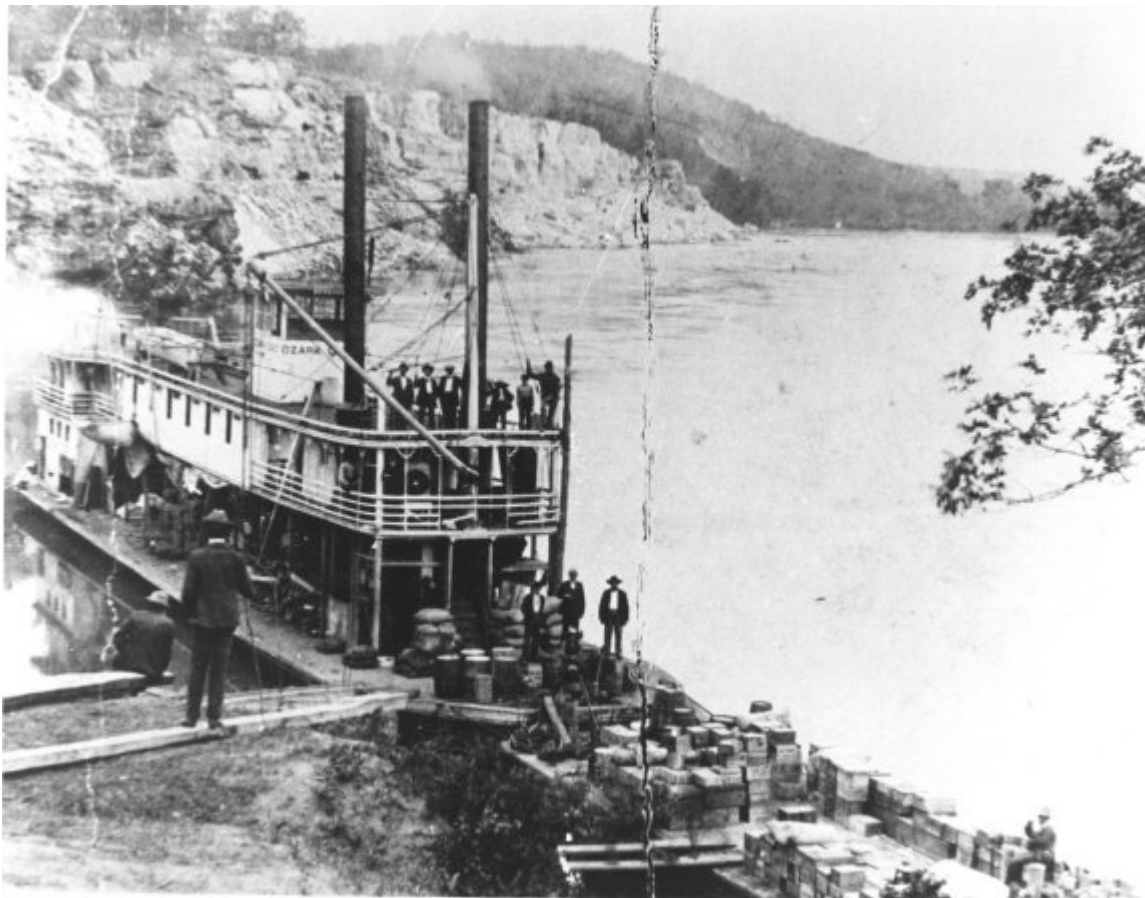
A model of the *Ozark Queen* has been generously provided to the museum by the **R.C. Matthews family**. The model was constructed by **Rev. Ed Matthews**, a founder and *trustee emeritus* of the museum.

She was christened on September 12, 1896 by June Glenn. Miss Glenn said, “I christen thee *Ozark Queen*. Glide smoothly to thy home on the beautiful White. Float lightly, speed swiftly and safely! Long live the *Queen*.”

The *Myrtle Corey* was the last steamboat to pass by Calico Landing in 1905. We have an original photograph and model of this steamboat presented along with those of the *Ozark Queen*.

Freight Costs

- 1820s** **Coffee was 2 pounds for \$1 (keelboats)**
- 1835** **Coffee was 3 pounds for \$1 (steamboats)**
- 1832** **Salt bought for \$0.18 a pound by traders**
Salt sold for \$0.25 a pound by merchants
- 1848** **General cargo rate of \$0.40 per hundred lbs.**
- 1858** **Mail contracts for \$16,000 a year**



Steamboat Landing (1831-1902)

- 1796 John Fitch builds the first steamboat**
- 1807 Robert Fulton given credit for first steamboat**
- 1831 *The Victoria* first steamboat past Calico Rock**
- 1835 Asa McFelix's keelboats and flatboats compete with steamboats, driving down prices**
- 1853 Calico Landing has most traffic above Batesville**
- 1858 Lucrative mail contracts offered to steamboats**
- 1867 *The Malta* landed at Calico Rock**
- 1869 *The Argus* landed at Calico Rock**
- 1892 *The Home* and *The Oakland* built at Calico Rock**
- 1896 *The Ozark Queen* christened into service**
- 1902 *The Queen* is last steamboat docked at Calico**
- 1905 *The Myrtle Corey* is last steamboat past Calico**